

RE 60 ELECTRICAL TOOL

Introducing the World's Most Versatile Electrical Tool, Featuring the Innovative 3-in-1 RIDGID® QuickChange System™



Benefits

- Cut wire, crimp lugs and punch boxes with just one tool via RIDGID's unique QuickChange System™
- Eliminates trips back and forth to the truck searching for different tools
- 3-in-1 tool saves valuable cargo space and comes in a single, easy-to-carry case
- In-line design for easy, one-handed operation even in tight spots
- 360° head rotation increases maneuverability
- Industry-leading service interval maximizes uptime on the job site

Specifications

- 60 kN hydraulic force output to cut armored cable up to 50 mm O.D., crimp Cu/Alu lugs up to 300 mm² and punch round holes up to 4" (116mm)
- Automatic ram retraction when cutting and crimping
- Rubber overmolded grips for superior comfort and control
- Bright white LED workspace illumination light
- On/Off button for disabling tool when changing heads or transporting
- Nylon straps for greater tool security
- Approximate Cycle Time: 5 seconds
- Service Interval: 32,000 cycles

Ordering Information

KITS*

CATALOG NO.	DESCRIPTION	NO. OF HEADS	CUT SC-60C	CRIMP LR-60B	PUNCH PH-60B
47228	RE60 Cut, Crimp and Punch Kit**	3	✓	✓	✓
47223	RE 60 Cut & Crimp Kit**	2	✓	✓	-
47208	RE 60 Crimp Only Kit	1	-	✓	-
47213	RE 60 Cut Only Kit (Cu/Al Blades)	1	✓	-	-
47218	RE 60 Punch Only Kit	1	-	-	✓

ACCESSORIES

CATALOG NO.	DESCRIPTION	WEIGHT	
		(lb.)	(kg)
47768	RE 60 Electrical Tool Only	5.5	2.5
47753	LR-60B Latching Round Crimp Head Only	3.3	1.5
47763	PH-60B Knockout Punch Head Only	3.5	1.6
47918	SC-60C Scissor Cutter Head w/ Blade for Cu/Alu Cable	4.7	2.1
49408	SC-60C Scissor Cutter Head with ACSR Blades	4.7	2.1
47773	RE 60 Electrical Tool Case Only	10.1	4.6
43323	18V Advanced Lithium 2.0Ah Battery	1.0	0.5
43328	18V Advanced Lithium 4.0Ah Battery	1.5	0.7
43333	Advanced Lithium Battery Charger	1.8	0.8

**All Kits Include: RE 60 Electrical Tool, (2) 18V Advanced Lithium 2 batteries, battery charger and blow-molded case.
*Includes SC-60C Cutter Head with Copper/Aluminum Blades.



Featuring the RIDGID QuickChange System™



RIDGID.COM

ELECTRICAL TOOLS

LR-60B LATCHING ROUND CRIMP HEAD



Cat. No. 47753

Benefits

- Crimp lugs up to 300 mm² cable
- Slim, ergonomic latching system allows tool to access tighter spaces
- 360° head rotation increases maneuverability
- Combine with other heads in the RIDGID® QuickChange System™ to maximize efficiency and productivity on the job site
- LR-60B hold round shape dies within the capacity range

Specifications

- Crimp up to 300 mm² copper and aluminium lugs
- Interchangeable crimp heads are compatible with RE 60 Electrical Tool featuring the Quick Change System™
- Approximate Cycle Time: 5 seconds
- Weight Crimping Heads: 1.5 kg
- Offering: LR-60B Latching Round Head available in a RE 60 Tool Kit and can also be purchased separately.

Featuring a slim latching system to get into tighter spaces, the LR-60B Latching Round Crimp Head can crimp up to 300 mm² copper and aluminium lugs.

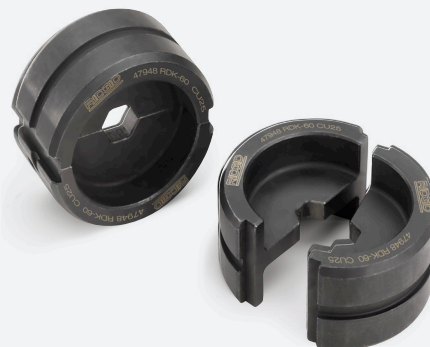


CATALOG NUMBER	DESCRIPTION
47208	RE 60 Electrical Tool Kit w/ Latching Round Head
47753	LR-60B Latching Round Crimp Head Only

CRIMPING DIES FOR LR-60B CRIMP HEAD

Catalog Number	Cross Section mm ²
47933	6
47938	10
47943	16
47948	25
47953	35
47958	50
47963	70
47968	95
47973	120
47978	150
47983	185
47988	240
47993	300

Round Crimping Dies for crimping standard type copper tubular lugs and connectors



Crimping dies are sold separately.

PH-60B HOLE PUNCHING HEAD



Benefits

- Effortlessly punch up to 4" (116mm) holes without burdensome ratcheting or pumping
- Compatible with knockout punch dies from RIDGID® and other manufacturers (sold separately)
- Combine with other heads in the RIDGID QuickChange System to maximize efficiency and productivity on the job site

Specifications

- Capacity: Punches up to 4" (116mm) holes in 12 gauge mild steel and 14 gauge stainless steel
- Interchangeable head is compatible with 60 kN RIDGID Electrical Tools featuring the RIDGID QuickChange System™
- Approximate Punch Time: 5 seconds
- Weight: 3.5 lbs. (1.59 kg)
- Includes: PH-60B Knockout Punch Head and instruction sheet; available as standalone head or in a RE 60 Tool Kit; large capacity punch adapter sold separately.

Designed for use with RIDGID and other commercially available punch dies, the Knockout Punch Head is ideal for punching up to 4" (116mm) holes in 12 gauge mild and 14 gauge stainless steel.

Cat. No. 47763



CATALOG NUMBER	DESCRIPTION
47218	RE 60 Electrical Tool Kit w/PH-60B Punch Head
47763	PH-60B Knockout Punch Head Only
47178	PH-60B Spacers, Draw Bolts and Drill Bit Accessory Kit
49423	PH-60B Large Capacity Adapter, Required to Punch 3.5" and 4" Holes
23492	KOPD-254 Set with 2 1/2", 3", 3 1/2", 4" Punches and Dies and Case

HOLE PUNCHING DIES & ACCESSORIES FOR PH-60B PUNCH HEAD

Standalone Hole Punch & Die

Catalog Number	Hole Punches for Punching Round Holes through max. 3 mm ST37 steel plates
44058	Hole Punch ST16 (16.2 mm)
44063	Hole Punch ST20/PG13 (20.4 mm)
44068	Hole Punch ST25 (25.4 mm)
44073	Hole Punch ST32 (32.5 mm)
44078	Hole Punch ST40 (40.5 mm)
44083	Hole Punch ST50 (50.5 mm)
44088	Hole Punch ST63 (63.5 mm)
44093	Hole Punch PG16 (22.5 mm)

- Hole Punches up to 25.4 mm require the use of 9.5 mm draw bolt (44098) and 1x Spacer No. 4 included in the Set of Spacers (44108)
 - Hole Punches larger than 25.4 mm require the use of 19 mm draw bolt (44103) and Spacer No. 1 and 2 included in the Set of Spacers (44108).

Hole Punch Set

Catalog Number	Hole Punch-Set featuring ST16/20/25/32/40 Hole Punches and Dies, 3 Spacers, 2 Draw Bolts and 1 Pre-drill
44113	Hole Punch-set



Hole Punching Accessories

Catalog Number	Accessories
44098	9.5 mm Draw Bolt required for ST16/20/PG13/ST25 punches
44103	19 mm Draw Bolt required for ST32/40/50/63 punches
44108	Set of Spacers required for all Hole Punch sizes

Punch dies and accessories are sold separately.

SC-60C SCISSOR CUTTER HEAD



Cat. No. 47918

Benefits

- Interchangeable heads for cutting up to 50mm O.D. armored copper/aluminum building wire or 240mm² ACSR
- 360° head rotation enables maneuverability in tight spaces
- Combine with other heads in the RIDGID QuickChange System to maximize efficiency and productivity on the job site

Specifications

- Capacity and Material: Interchangeable heads available for cutting up to 50mm O.D. armored copper/aluminum building wire or 240mm² ACSR
- Interchangeable head is compatible with 60 kN RIDGID Electrical Tools featuring the RIDGID QuickChange System
- Made from a high-strength steel alloy to increase durability and lifespan of scissor cutter head
- Approximate Cut Time: 5 seconds
- Weight: 4.75 lbs. (2.15 kg)
- Includes: SC-60C Scissor Cutter Head with blades for Cu/Al cable and instruction sheet; available as stand-alone head or in an Electrical Tool Kit

Designed for cutting up to 50mm O.D. armored copper/aluminum building wire or 240mm² ACSR



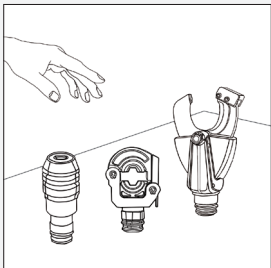
Cat. No. 47923



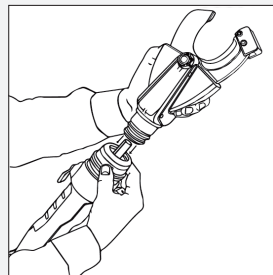
Cat. No. 47928

CATALOG NUMBER	DESCRIPTION
47213	RE 60 Electrical Tool Kit w/SC-60C Scissor Cutter Head
47918	SC-60C Cutter Head with Copper/Aluminum Wire Blades
49408	SC-60C Cutter Head with ACSR Blades
47923	Replacement Blades for Copper/Aluminum Wire
47928	Replacement Blades for ACSR

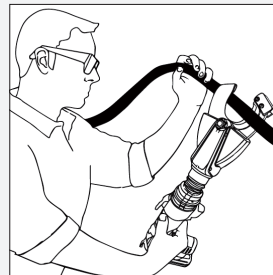
How the RIDGID® QuickChange System™ Works



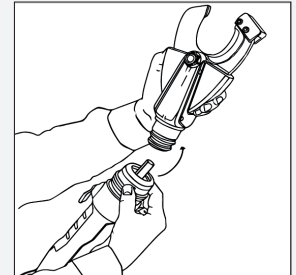
- 1.** Select the appropriate interchangeable head for the job.



- 2.** Pull back the collar. Insert the head until you hear a click confirming the connection.



- 3.** Complete the job – cut, crimp or punch.



- 4.** Remove the head by pulling the collar toward the base of the tool.

RIDGID

Ridge Tool Asia Pacific
Robinsons Cybergate
Plaza Mandaluyong City
1550 Philippines

Tel: +63 (2)214 6804
ridgidfareast@emerson.com
www.RIDGID.com

EMERSON
Commercial & Residential Solutions